

PARTNERING FOR SUCCESS



**Medina County
Park District**

Celebrating 60 Years

Session Goals

1. Leverage relationships and local dollars
 - ✓ Expand our reach
 - ✓ Influence public perception
 - ✓ Secure additional funding
2. Examples to inspire and build a stronger community



Medina County Park District

- Established April 19, 1965
- ORC 1545
- Almost 9,000 acres
- 22 open areas
- 50 different trails
- 40 employees

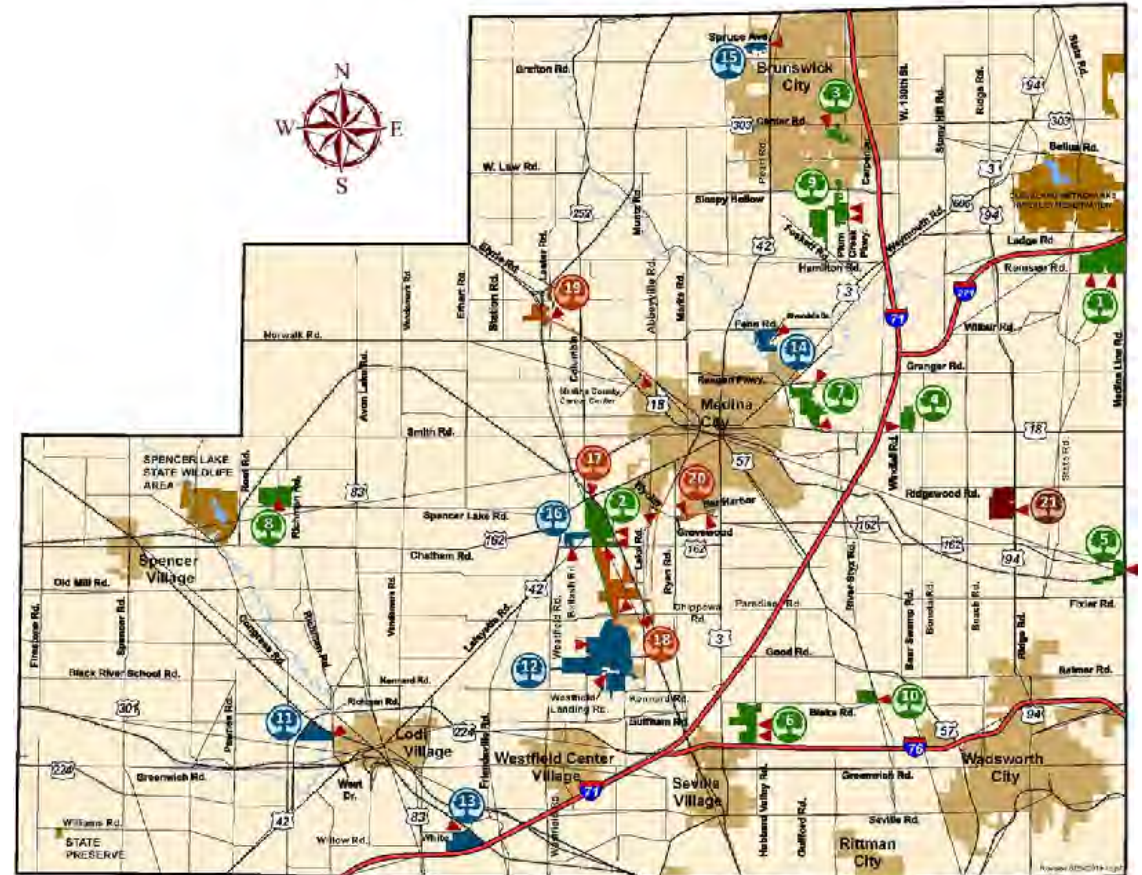
PROBATE COURT
Judge Kevin W. Dunn

COMMISSIONERS

Kathleen E. Davis

Dennis B. Neate

Jason C. Venner



Medina County
Park District

Celebrating 60 Years

partnership noun

part-ner-ship ('pärt-nər-,ship) also 'pärd-

Synonyms of *partnership* >

- 1 : the state of being a partner **PARTICIPATION**
| scientists working in *partnership* with each other
- 2 a : a legal relation existing between two or more persons contractually associated as joint principals in a business
| began a legal *partnership* with his uncle
b : the persons joined together in a partnership
| the *partnership* computes its net income ... in a manner similar to that of an individual
- J. K. Lasser
- 3 : a relationship resembling a legal partnership and usually involving close cooperation between parties having specified and joint rights and responsibilities
| The band has maintained a successful *partnership* for 10 years.

Synonyms

- | | | |
|---------------|---------------|--------------|
| affiliation | alliance | association |
| collaboration | confederation | connection |
| cooperation | hookup | liaison |
| linkup | relation | relationship |
| tie-up | union | |

- Working together
- Shared goals
- Overlapping mission
- Lease, special-use permit, license, or MOU

City of Brunswick

Plum Creek Greenway

- 2-mile paved trail connecting MCPD's Plum Creek Park and Brunswick Lake
- Approx 1.5 miles built and paid for by the city
- Agreement for MCPD to patrol and manage for 25 years
- Cost of repairs in excess of \$75K to be shared



City of Wadsworth

Holmesbrook Park

- 2022: 50-year agreement to manage city's largest park (59.3 acres)
- MCPD improvements: restrooms, picnic shelter, fishing platform, more
- Previously, no presence in this city of 25,000



FRIENDS
of Medina County Parks



**Medina County
Park District**
Celebrating 60 Years

Northeastern Ohio Live Steamers

- Relationship with MCPD dates back to 2000
- NEOLS has exclusive use of site; it owns track and non-permanent improvements
- If group moves/dissolves, MPCD owns permanent improvements
- Free public programs required
- No deed restrictions on land



Cuyahoga Astronomical Association

- Small, roll-off observatory building at Letha House Park; built as donation in 2001
- CAA has exclusive use of the building, non-exclusive use of site, for 10 years
- Free public programs required



Cuyahoga Astronomical Association

A Few Sections of the Lease

Public programming. As additional consideration for this lease, CAA shall provide, at no cost to the Park District, regular educational programs in a manner and form that shall be reasonably acceptable to the Park District, and shall be open for public participation. The Parties shall work in advance in good faith each year to plan and develop such programs. CAA shall provide a final written proposal to the Park District, based on its planning with the Park District, as requested by the interpretive services manager. CAA shall be solely responsible for the successful implementation of such programs.

Repairs. CAA is responsible for costs associated with any and all repairs for the Observatory. CAA shall inspect the Observatory, buildings and improvements throughout the term of the lease shall promptly notify the Park District, in writing, when significant repairs are required. CAA shall be responsible for the costs of capital improvements.

Approval and recording of Agreement. This Agreement is contingent upon approval by the Medina County Probate Court. It will **not** be recorded with the Medina County Recorder's Office.

Highland Youth Football

- Green Leaf Park is MCPD's oldest park (1970s)
- Green Leaf has been home of HYF for at least 40 years
- Exclusive use of field during football season
- HYF stripes field, paints goals; required to reserve shelter
- MCPD doesn't allow other uses that would impact field



Lodi Library

- MCPD purchased 67 acres behind library in 2022
- License in place before closing for use of library parking lot
- Library excited about traffic
- MCPD's capital expenses limited to trails, signage; portion of lot maintenance
- **Lodi Woods Nature Preserve:**
Fall of 2026



Chippewa Lake

- Ohio's largest inland glacial lake; SW of downtown Medina
- Picnic grounds, amusement park for 100 years (1878-1978)
- Abandoned 40+ years
- MCPD: 300-acre lake in 2007
- 93-acre amusement park in '20
- "Private lake"
- "Outsiders"



Medina County
Park District

Celebrating 60 Years



Village of Gloria Glens

- 10-year lease, 1.5 acres
- “Historic use”; not great for general public access
- Village maintains docking program for its residents; keeps fees collected
- Village responsible for shoreline improvements



Chippewa Yacht Club

- Club dates back to 1930s
- Reached out to CYC *before purchase was completed*
- 20-year agreement effective 2021; **\$5,000 annually**
- Public programming: water safety courses, skills camps
- CYC has invested in the property, and in its members



FRIENDS
of Medina County Parks



**Medina County
Park District**
Celebrating 60 Years

Chippewa Lake Historical Society

- MCPD purchased home in '23
- 10-year lease to CLHS
- CLHS responsible for interior repairs and all utilities; MCPD updating the exterior
- Trailhead for new park
- Public engagement (i.e., museum hours) required



FRIENDS
of Medina County Parks



**Medina County
Park District**

Celebrating 60 Years

Chippewa Stakeholders Group

- New rules needed
- Community response
- Group formed before '24 season to talk through concerns; recommendations
- Implementation
- Now, changes to docking program for '25



Friends of Medina County Parks

- Nonprofit, 501(c)(3)
- Est. 1970s
- Supports programs, enhances development projects
- \$6 million in assets
 - 3 restricted funds held by

CLEVELAND
Foundation



FRIENDS
of Medina County Parks



**Medina County
Park District**
Celebrating 60 Years

Brown-Trump Homestead

- 16-acre property with strict conservation easement
- *Multiple partners*
- Agreement 1, Friends-MCPD
- Agreement 2, MCPD-Recovery
- Recovery housing; lessee maintains the property
- Garden benefits food pantry
- 1,000 lbs. of produce in '23
- 4,000 lbs. in '24



FRIENDS
of Medina County Parks

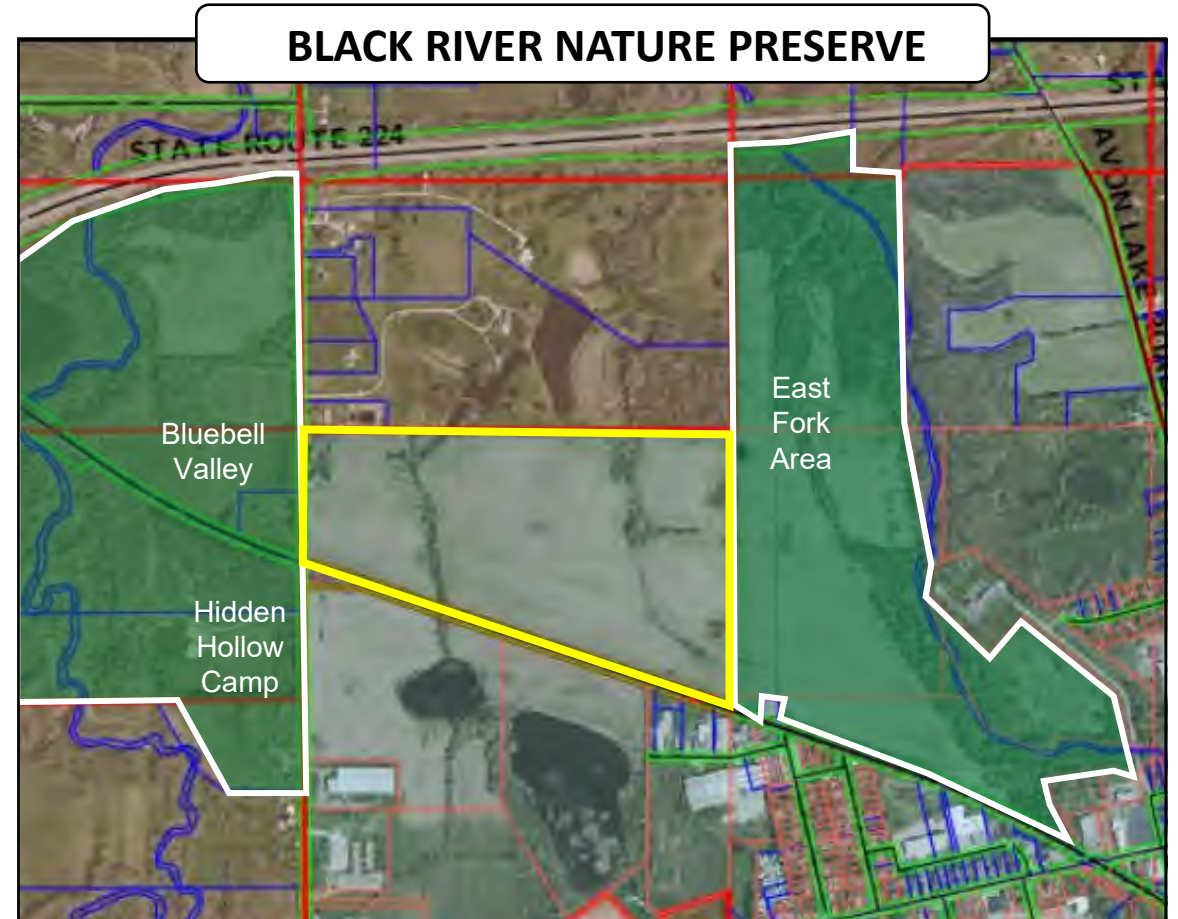


**Medina County
Park District**
Celebrating 60 Years

West Creek Conservancy

Lodi Project

- 77 acres between MCPD areas
- Willing seller: \$750,000
- WCC → Purchase
- H2Ohio for partial restoration
- Mitigation for add'l restoration
- Cost to MCPD: \$75,000
- Restored property with CE and 20-foot trail easement





West Creek Conservancy

Yellow Creek Project

- 194 acres *on Medina Line*
- \$4 million valuation
- WCC → Clean Ohio app
- Summit Metro Parks biologists
- \$1.4 million Clean Ohio grant secured for Phase 1. MCPD = \$475,000.
- Phase 2: WCC → Clean Ohio, Community Forest Program



Cleveland Metroparks

Clean Ohio Support

- MCPD under contract to buy 105 acres across from CM's Hinckley Reservation
- Clean Ohio unsuccessful in '20
- CM agreed to buy 6 acres from same owner and improved our initial application
 - '21: top-scoring project;
MCPD paid \$19,000!



Future Possibilities

- Medina County Antique Power Association
- Medina County Beekeepers Association
- Medina County Community Foundation



MEDINA COUNTY
COMMUNITY FOUNDATION



Medina County
Park District

Celebrating 60 Years

Our Donors Are Partners, Too



Shotwell Gardens at Lake Medina



Playscape at Allardale Park

WHEREAS, District agrees to involve the Becky Shotwell family in the creative development of the Property, including, but not limited to, tree selection and naming for any development on the Property.

Sample Agreements

Scan the QR code for copies of several agreements described today.



QUESTIONS & DISCUSSION



**Medina County
Park District**
Celebrating 60 Years

Nate Eppink
330-590-0112
neppink@medinaco.org

Session Evaluation

Scan the QR code.

*Great session, or
greatest session?*



Nate Eppink
330-590-0112
neppink@medinaco.org

