



# Miami County Park District John A. Wannemacher Nature Reserve

1876 Monroe Concord Road, Troy

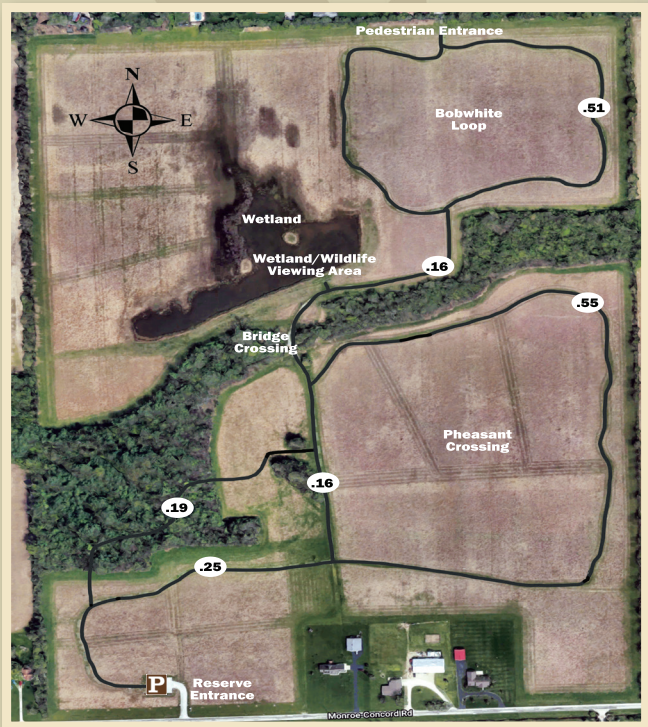
## Natural Features

- 110 Acres
- Woodland
- Wetland
- Boone Creek
- Large open prairies

This reclaimed agricultural land is a perfect habitat for wildlife amidst the surrounding farmland and residential developments. The wetlands attract a large variety of water fowl making it a great place for bird watching.

## Facilities

- Wetland viewing area
- 1.82 Miles of trail



## Park Hours

Open 365 days a year from 8 a.m. to sunset.

Charleston Falls Preserve   F.L. Blankenship   Farrington Reserve   Honey Creek Preserve  
Garbry Big Woods Reserve & Sanctuary   Hobart Urban Nature Preserve   Lost Creek Reserve  
Goode Prairie Reserve & Preserve   Great Miami River Recreational Trail   Twin Arch Reserve  
Greenville Falls State Scenic River Area   Maple Ridge Reserve   Stillwater Prairie Reserve  
John A. Wannemacher Nature Reserve