



VIDEOQUEST

SUBJECTS: English Language Arts, Science

SKILLS: Vocabulary Acquisition

MATERIALS

- Computer/tablet/phone
- Student Sheet: VideoQuest page 1-3 of Discovery Journal
- FLIPGRID Challenge: Weathering, Erosion, Deposition

COMMON CORE STATE STANDARDS (CCSS)

ENGLISH LANGUAGE ARTS

- 4.RI.4** Determine the meaning of general academic and domain-specific words or phrases in a text relevant to a grade 4 topic or subject area.
- 4.RI.7** Interpret information presented visually, orally or quantitatively and explain how the information contributes to the understanding of the text in which it appears.
- 4.RF.3a** Know and apply grade-level phonics and word analysis skills in decoding words.

SCIENCE (OHIO LEARNING STANDARDS)

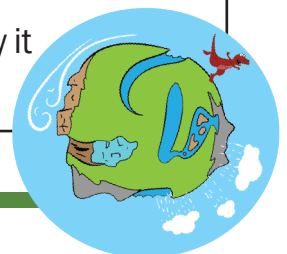
- 4.ESS.1** Earth's surface has specific characteristics and landforms that can be identified.
- 4.ESS.2** The surface of Earth changes due to weathering.
- 4.ESS.3** The surface of Earth changes due to erosion and deposition.

ESSENTIAL QUESTIONS

1. What strategies and resources do learners use to figure out unknown vocabulary?
2. How do I use context clues to understand the meaning of a word or phrase?
3. What is the importance of deposition in changing the Earth's surface?

I CAN STATEMENTS (LEARNING OBJECTIVES)

1. I can define words that are specific to weathering, erosion and deposition.
2. I can use various sources to build my vocabulary and help me understand what I read and hear.
3. I can describe the importance of the weathering, erosion and deposition cycle and why it is important in shaping the Earth's surface.



LINKS

- **Slug Science Journeys Homepage** <https://www.miamicountyparks.com/node/1253>
- **WED Video** <https://vimeo.com/videobranch/review/415284976/170572d2bf>

ACTIVITY

VIDEOQUEST

Students will use the Weathering, Erosion, Deposition SLUG SCIENCE JOURNEY video featuring the Banana Slug String Band to complete a Video Quest. The Video Quest requires the students to view the video to find the definitions of key vocabulary words. The students will record their answers on pages 1-3 of the student sheet located in the Discovery Journal.

DIFFERENTIATION

There are 2 versions of the student sheet: One contains the time on the video where the answer can be found, the other is a more challenging version without the timestamps.

The students may also complete the **FLIPGRID Challenge: Weathering, Erosion and Deposition**, which asks them to find real world examples.

EVIDENCE OF ACTIVITY

Students will complete the student sheet on pages 1-3 of the Discovery Journal, and complete the **FLIPGRID Challenge: Weathering, Erosion and Deposition**, which asks them to find real world examples.