


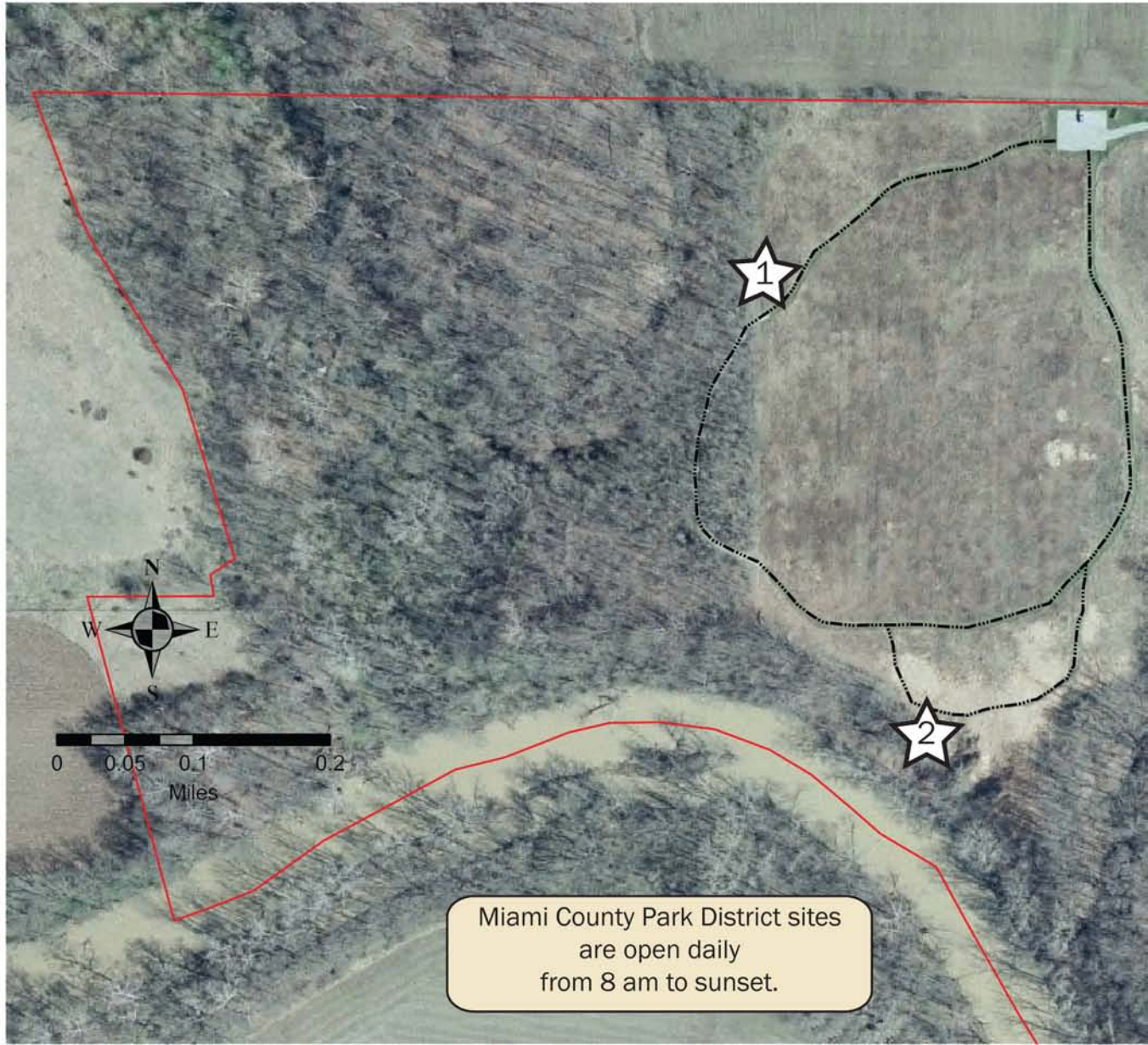


# RAMBLE QUEST

## Goode Prairie Preserve



At each  you will find a rubbing plate mounted on a park structure. Don't forget to find the cairn logo at each park, the symbol of your quest. All other rubbings are of a variety of leaves.



Miami County Park District sites  
are open daily  
from 8 am to sunset.

## RAMBLE QUEST

### A JOURNEY WITH A MISSION

Hike the trails at all 12 of our Miami County Park District parks, over 25 miles! Collect rubbings along the way and earn a unique hiking stick medallion. A different park will be added to the program each month. A map of the new location will be available at: [www.miamicountyparks.com](http://www.miamicountyparks.com) at the beginning of each month.

### HOW TO PARTICIPATE

Download Rubbing Station maps for each month's new park all year long.

Go to that park with the map and a crayon or pencil to make rubbings from the stations. Feel free to use the back of this map for the rubbings.

Walk the trails to find all the rubbing stations. Please be sure to stay on the trails!

Make a rubbing at each station. The rubbings must be recognizable and they must be an actual rubbing. Traced outlines will not be accepted.

Save all the rubbings from each park you visit.

When all rubbings are collected from the 12 parks, call our office to set up a time to collect your medallion! (937) 667-1286. Medallions will be awarded until all prizes are claimed.